

Quasi-Quarantine

When we think of quarantine during the Covid-19 pandemic, we think of a time of hardship where isolation and repetition seemed to be the norm. We have decided to curate a collection of works that mimic the indistinguishable likeness of most people's day-to-day lives. Our intention was to portray the mental health effects of trying to replace the outside world with our own spaces. At first glance at the plan of the room, it is obvious that from right to left, the colors and emotions start to get darker and less positive. We begin on wall B with a bright, optimistic yellow, to a dark, gloomy blue on wall C. Adjacent to walls B and C are portrayals of stages of the day, wall D, opposite to their equivalent mental state, wall A. Starting from wall A and continuing to wall C, the colors are brighter and the figure has a positive aura of starting the day. But as the day continues and the colors get dimmer, the effects of isolation start to be showcased.

The Flavin installations set the tone for the whole room. With a set of Arruda's on one wall, going from sunrise to night, the opposite wall has a collection of Gromley's showcasing figures and how their mental state correlates with the changes of light throughout the day. The beginning of the day is always filled with ambitions and hopes for what is to come, but as the day goes on the stresses of daily life start to take their toll. With the setting of the sun comes the onset of anxieties and stress. The decision to only use three artists for all eight works was to showcase the repetition and lack of impulsivity that derives from time spent in isolation. By using assimilation of colors as well as societal stigmas that have been created for different intervals of time, we have created a simulation of a day in quarantine. For instance, we assimilate darkness, nighttime, and cool colors with feelings of sadness, stress, and anxiety. We aim to create a room in which the viewer feels as though they are in an ongoing cycle of emotions.

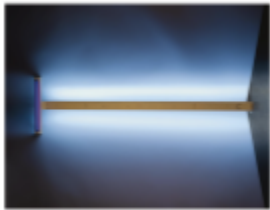
Total- \$ 1,224,158.39*

*All prices converted March 25, 2021

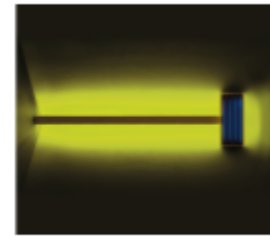
Wall A



Wall C



BOTH FLAVINS LEANING
AGAINST MIDDLE OF
THE WALL



Wall B

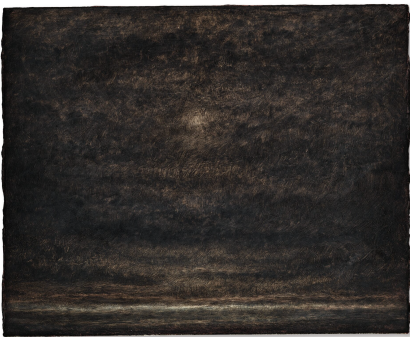


Wall D



Lucas Arruda
UNTITLED
2014
Oil on canvas
Estimated at \$123,633.45*

<https://www.sothebys.com/en/buy/auction/2021/contemporary-art-day-auction/untitled-3>



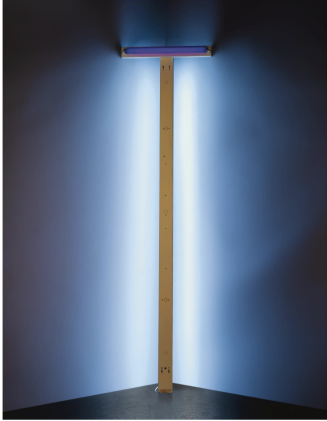
Lucas Arruda
UNTITLED (FROM THE DESERTO-MODELO SERIES)
1983
Oil on canvas
Price realized: \$ 312,500

<https://www.sothebys.com/en/auctions/ecatalogue/2019/contemporary-art-day-n10150/lot.439.html>



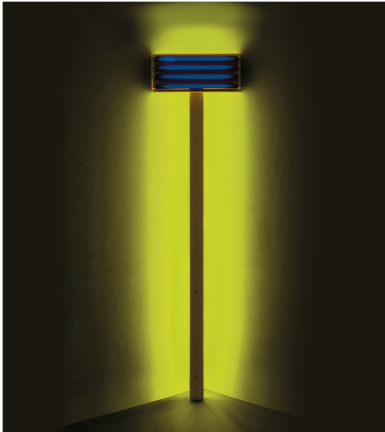
Lucas Arruda
UNTITLED
2012
Oil on Canvas
Price Realized: \$ 350,000

<https://www.sothebys.com/en/buy/auction/2020/contemporary-art-day-an-online-auction/lucas-arruda-untitled>



Dan Flavin
Untitled
1966
Ultraviolet and blue fluorescent light
Price realized: \$ 248,984.03*

<https://www.sothebys.com/en/auctions/ecatalogue/2009/contemporary-evening-auction-109622/lot.27.html>



Dan Flavin
Untitled
1992
Ultraviolet and Yellow Fluorescent Light
Price realized: \$137,370.50*

https://www.christies.com/lot/lot-dan-flavin-1933-1996-untitled-for-s-d-6309341/?from=salesummary&intObjectID=6309341&lid=1&ldp_breadcrumb=back



Anthony Gormley
Show
2015
Carbon and Casein on Paper
Price realized: \$9,613.10*

<https://onlineonly.christies.com/s/first-open-post-war-contemporary-art-online/antony-gormley-b-1950-25/115419>



Anthony Gormley
Dive
2019
Carbon and Casein on Paper
Price realized: \$27,466*

<https://www.christies.com/lot/lot-6309407/?intObjectID=6309407>



Anthony Gormley
Hold II
2020
Hare's blood on paper
Price realized: \$14,591.31*

<https://www.christies.com/lot/lot-6309432/?intObjectID=6309432>